

# e-Catalog

Fast, simple online system for spare parts and services



## Always open to simplify your business

No matter where in the world your plant is located, our inventory is at your fingertips. e-Catalog is GE's online shop for spare parts and services for oil and gas operators. It's easy to use and always open for business.

But it's not a one-stop shop that serves everyone in the same way – it's tailored to your specific operations and equipment requirements. There are also powerful reference and maintenance planning resources, equipment manuals, quotation request forms and many other valuable tools.

### Find it

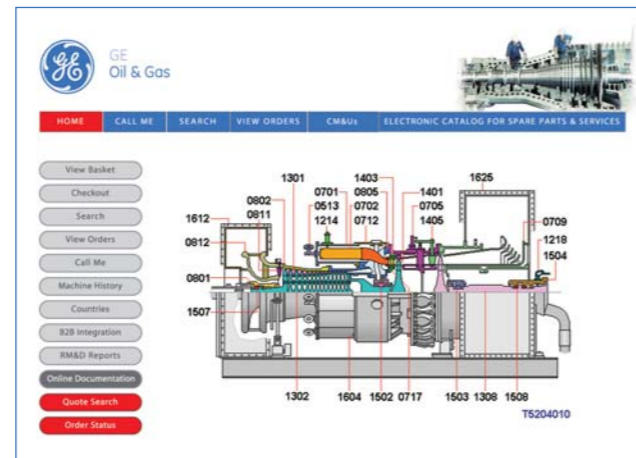
e-Catalog enables fast and easy part identification – you can perform basic code and tabular searches, as well as using an interactive, clickable graphic tool for each machine in your fleet. The system offers 'as running' machine bill of material driven capabilities, with end user choice between flange-to-flange versus auxiliary specific navigation or full machine drill down options.

e-Catalog provides an additional full integrated parts identification system specifically designed for maintenance level compliant management. You can browse your fleet database using five different criteria, including customer part number, drawing numbers and one-shot multiple part code searching.

### Get it

Once a spare part is identified, e-Catalog provides a full range of product details and options, including complete technical information, price options and delivery terms, fleet interchangeability options, obsolete part numbers and much more.

Parts can be placed in your shopping cart for immediate purchase and delivery. Multiple shopping carts can be set up for different users within the same company, and for specific orders/proposals so the information can be saved, monitored and managed.



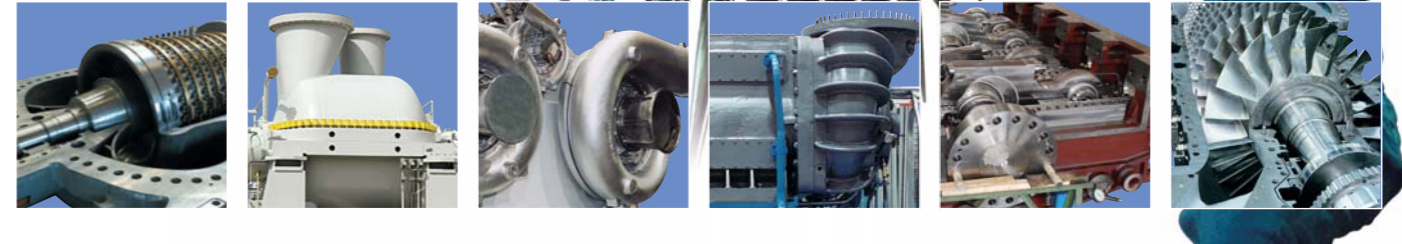
Gas turbine part selection screen - similar graphic drill-down capabilities are available for all products



Main search engine with keyword, category and partial/complete product number criteria



CM&Us detail screen with overview and links to complete reference information



## A powerful resource

- Full, secure e-commerce capabilities
- Real-time tracking of quote/order status and inventory levels
- Graphic drill-down and clickable navigation to quickly and easily identify parts
- Spare parts maintenance level planning system
- Machine specific cross-reference master book for Conversions Modifications & Uprates
- Access to your Remote Monitoring & Diagnostic reports
- Technical Customer Information bulletin board
- Choice of five languages and customizable graphical interface
- Flange-to-flange and MSD (Auxiliary) tabular and graphical navigation
- Multiple-criteria parts search engine by:
  - GE and customer part number
  - Part description free text/keyword
  - Drawing number
  - Single or multiple part number code
- Machine maintenance history log book
- Multiple permanent shopping cart user-specific management options
- User profiles for differentiated access
- Quote/order management integrated with our legacy system
- Obsolete parts code warning system
- B2B e-procurement integrated solution (SAP) Open Catalog Interface compliant
- B2B engine for complete sales cycle management
- Back office integrated infrastructure (both sales and engineering)
- Online user guide

# Parts & service Fast & easy

**Nuovo Pignone S.p.A.**  
Via Felice Matteucci, 2  
50127 Florence, Italy  
T +39 055 427 2500  
F +39 055 423 2800  
E [customer.service.center@ge.com](mailto:customer.service.center@ge.com)

[www.ge.com/oilandgas](http://www.ge.com/oilandgas)

The information contained herein is general in nature and is not intended for specific construction, installation or application purposes. GE reserves the right to make changes in specifications or add improvements at any time without notice or obligation.

©2007 General Electric Company  
All Rights Reserved



GE imagination at work