

# Houston Service Center

North America Service Headquarters



## Turbomachinery Repair

- Inspection and repair of GE and non-GE turbo machinery
- Mechanical Conversions, Modifications and Upgrades
- Dedicated shop support for turnarounds and outages
- Multi-disciplined in-house component repair with dedicated metallurgy lab
- In-house coating capabilities through Praxair
- GE Quality standards and procedures

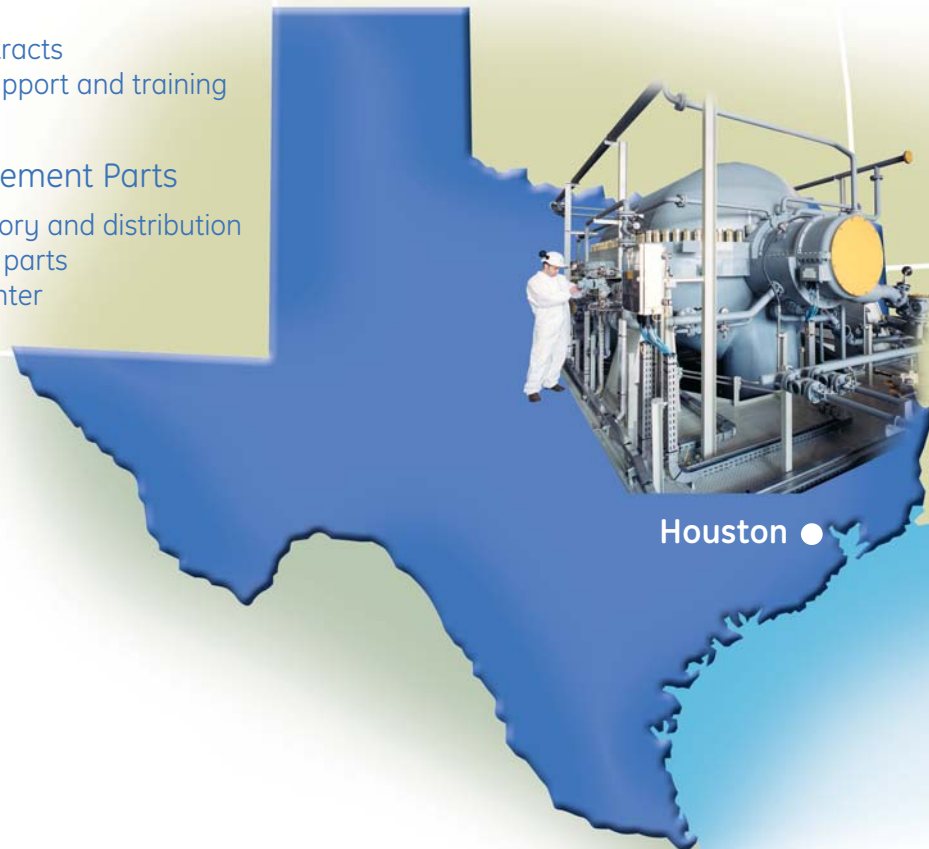


## Field Service and Technical Assistance

- Outage and project management
- Installation and commissioning
- Troubleshooting and emergency support
- Service contracts
- Technical support and training

## OEM Replacement Parts

- Local inventory and distribution
- Refurbished parts
- 24-7 call center



Houston ●

# Around the corner ... Service around the world

## Inspection and Repair Capabilities

### Compressors

- Centrifugal compressors
- Axial compressors
- Screw compressors
- Overhung single stage compressors
- Reciprocating compressors

### Gas Turbines

- Mechanical drive – GE10, Frame 3, and Frame 5
- Generator drive GE5, GE10, Frame 5, Frame 6, Westinghouse
- Component repair and refurbishment
  - Rotors
  - Compressor blades
  - Buckets
  - Nozzles
  - Shrouds
  - Liners and transition pieces (partial repair)

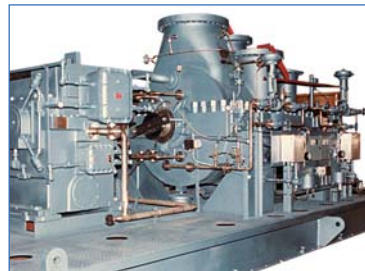
### Steam Turbines

- Single stage steam turbines
- Multistage steam turbines
- Multi-vendor service upgrades, for both compression and steam
  - Rotors
  - Compressor blades
  - Buckets
  - Nozzles
  - Shrouds
  - Liners and transition pieces (partial repair)

### Turboexpanders

### Gearboxes

### OEM Product Lines



GE imagination at work